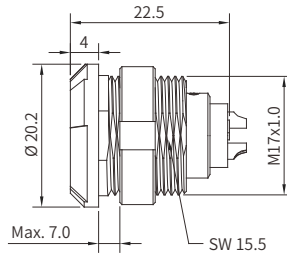


■ 2P Series, PLB Fixed Straight Socket, Key(B)

- Connector series: 2P
- Connector gender: Female
- Key: B
- Locking type: Self-locking
- Orientation type: Straight
- Part No.: PLB.2P.3XX.GLLG
- Mated with: PPB series

Note: "X" refers to part number definition on page 135



■ General Information

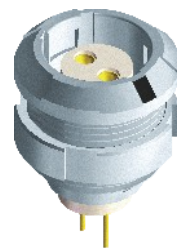
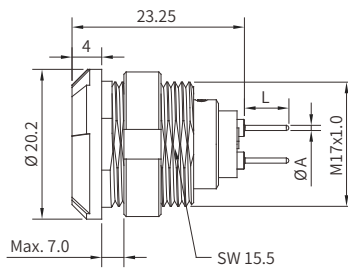
Ambient temperature:	-50 °C ~ + 150 °C
Endurance:	>1000 cycles
Insulator:	PEEK
Fixing nut:	PSU

Outershell:	PSU
Connector contacts:	Bronze with gold plated
Insulator resistance:	≥100MΩ
IP rating:	IP 50

■ 2P Series, PLB Fixed Straight Socket, Key(B), Contact For Printed Circuit

- Connector series: 2P
- Connector gender: Female
- Key: B
- Locking type: Self-locking
- Orientation type: Straight
- Part No.: PLB.2P.3XX.GLNG
- Mated with: PPB series

Note: "X" refers to part number definition on page 135



■ General Information

Ambient temperature:	-50 °C ~ + 150 °C
Endurance:	>1000 cycles
Insulator:	PEEK
Fixing nut:	PSU

Outershell:	PSU
Connector contacts:	Bronze with gold plated
Insulator resistance:	≥100MΩ
IP rating:	IP 50

Pin	Dimensions(mm)	
	ØA	L
302~319	0.7	5.6
326~332	0.5	3.4

Note: Panel cut-out (P 164); PCB drilling pattern (P 166)